

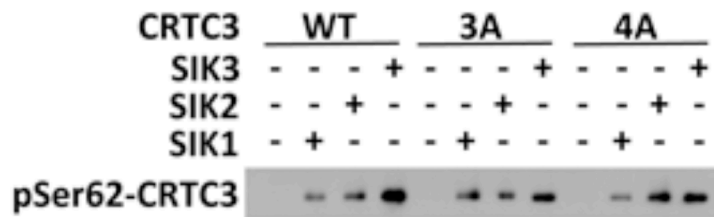
Antibody Datasheet

- Product description:-** Anti-CRTC3 phospho Ser 62
- Antigen:-** TQYHGGG*LPNVS [residues 56 - 67 of human]
- Sheep Number:-** S368D
- Formulation:-** Phosphate Buffered Saline
- Storage temperature:-** -20 °C
- Purification Method:-** Affinity purified against phospho specific peptide
- Working Concentration:-** For immunoblotting use at 1 ug / ml, in the presence of 10 ug/ml of the non-phospho peptide

Immunoblotting:-
 Detects recombinant CRTC3 only after phosphorylation by recombinant SIKs. Also detected CRTC3 carrying the S62A mutation indicating that the antibody also recognizes another phosphorylated residue. Sequence alignment suggests that it may recognize phospho Ser273.

Very weakly detected CRTC3 WT in extracts of HEK293 cells overexpressing FLAG-CRTC3.

Antibody S368D



Purified CRTC3 WT (wildtype), 3A (S62A S329A S370A) or 4A (S62A S162A S329A S370A) were incubated alone or in combination with recombinant SIK1, SIK2 or SIK3 and MgATP for 30 mins at 30 deg C. Reactions were stopped using EDTA, resolved on SDS-Page gel and immunoblotted using anti-CRTC3 phospho Ser 62 S368D at 1 ug/ml in 5 % BSA-TBST